

Mold Cooling Hoses and Dedicated Couplings for Aluminum Die-Casting

Hose Piping Easy Kit

New

Patented

CH series

SC series

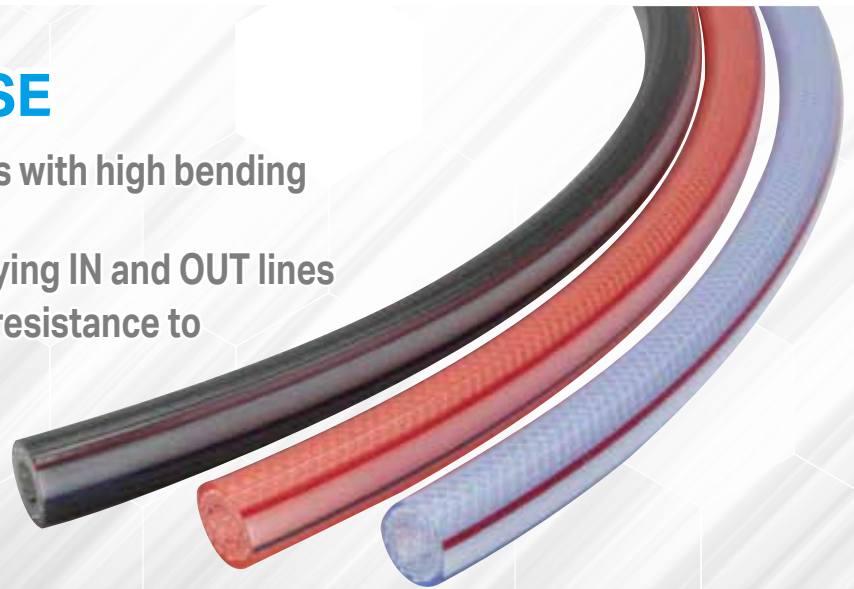
ChillerWater HOSE & S-CONNECTOR®

ChillerWater HOSE

Soft, thick-walled hoses with high bending resistance

Can be used for identifying IN and OUT lines

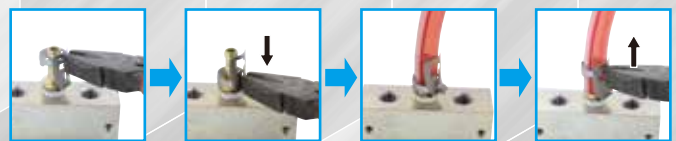
Long-lasting with high resistance to oil mist



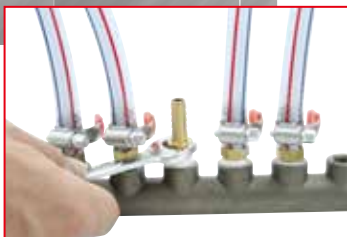
S-CONNECTOR®

Prevents fluid leaks and disconnections

Quick, easy installation on hoses



Usable even with limited space between couplings



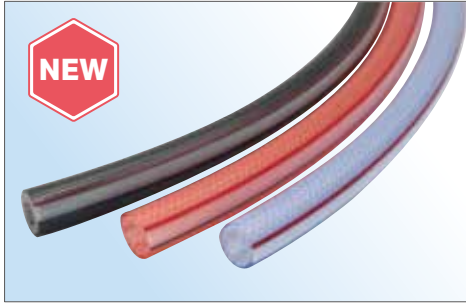
Conventional coupling installation



S-CONNECTOR installation

For inquiries and orders:

■ ChillerWater HOSE



Applicable fluid: Water

Operating temperature range: -5 to 60°C

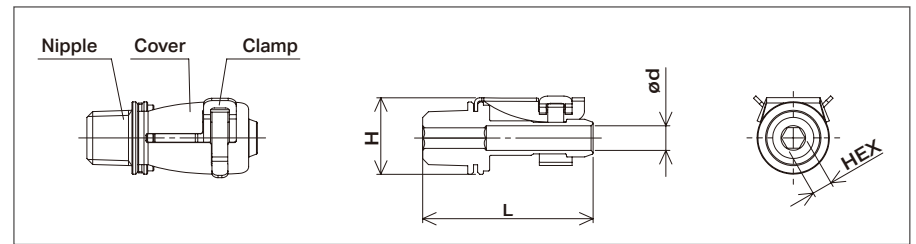
Operating pressure range: 0 to 1.0 MPa

Model	Inner diameter × Outer diameter (mm)	Color	Standard weight (kg/roll)	Standard length (m)	Minimum bending radius (mm)	Price (yen/m)
CH-6RD	6.5 × 13	Red	12	100	30	
CH-6BK		Black				
CH-6BL		Blue				
CH-8RD	8 × 15	Red	15	100	35	
CH-8BK		Black				
CH-8BL		Blue				
CH-9RD	9.5 × 16.5	Red	19	100	45	
CH-9BK		Black				
CH-9BL		Blue				

Main material: Soft PVC Reinforcing material: Polyester thread Packing: Bobbin style

* Conforms to RoHS2 revised standards

■ S-CONNECTOR® (Dedicated ChillerWater HOSE coupling)



* Conforms to RoHS2 revised standards

Model	Compatible hoses	Thread standard	Dimensions (mm)				Weight (g)	Price (yen/connector)
			L	HEX	ød	H		
SC-6-R1/4	CH-6	R1/4	39.5	4	4.8	16.8	24	
SC-8-R1/4	CH-8	R1/4	41.5	5	6.0	18.6	28	
SC-9-R3/8	CH-9	R3/8	43.5	6	7.2	20.1	39	

Material — Nipple: Brass, Cover: Stainless steel, Clamp: Iron

Applicable fluid/temperature/pressure: Dependent on ChillerWater HOSE

HANDLING PRECAUTIONS — Check before purchasing

- This hose is designed for use with water. Do not use it with anything else.
- Do not use for foods, drinks or medical applications (such as medical treatment and medicinal administration).**
- Do not use the hose outside the specified operating temperature range or operating pressure range.
- Do not use the hose below the minimum bending radius. Using the hose below the minimum bending radius will result in the hose becoming bent, thereby reducing the pressure resistance.
- Keep hose away from exposed light fixtures.
- Avoid use close to molds in environments where the hose will get hot (such as in locations where the hose comes into direct contact with steam).
- It is recommended to use Toyox-dedicated hose couplings and hose clamps. Retighten hose clamps appropriately. Warping of the resin in the hose clamp fastening part may lead to water leaks and hose disconnections. Failing to use Toyox-dedicated products may lead to water leaks and fitting disconnections.
- Do not use wires or similar items in place of hose clamps. Excessive tightening may lead to cuts on the interior and exterior hose surfaces, resulting in hose ruptures and water leaks.
- Do not use one-push fittings or hose may burst or explode.
- The life of the hose can vary substantially depending on factors such as the physical properties of the fluid, the temperature and flow rate, and frequency of compression and decompression. If any of the following abnormalities is found at the every-day's check up or the regular inspection, stop using the hose immediately, and repair it or replace it with a new one:
 - Problem with a hose around fitting ... Localized stretch, curvature, leakage or expansion, or less deep insertion into nipple.
 - Damage ... Large scratch, crack, or an inundated reinforcement layer.
 - Internal damage ... Internal swelling, peeling, or friction damage (such as when hose reinforcing materials are exposed)
 (Note) If the interior damage occurs, foreign objects peeled off the hose or fragments of the reinforcing material may mix with the fluid.
 - Other damage such as hardening, swelling, cracks, expansion, etc.
- Do not store the product outdoors or in direct sunlight. Such conditions can affect exterior hose surface, particularly with respect to stickiness and cracking. Store hose in a well-ventilated place with low humidity.
- Do not store the product in contact with other PVC products or close to rubber products.
- Do not incinerate the hose. Used hose should be disposed of as industrial waste. Note that incineration of the product may cause damage to incineration facilities or generate toxic gases.
- The hose should be disposed of in accordance with the requirements of the local region.